

ENV-PR-03 Carbon Reduction Plan

Process owner: Managing Director

Rev 2

Date 12 Aug 2024

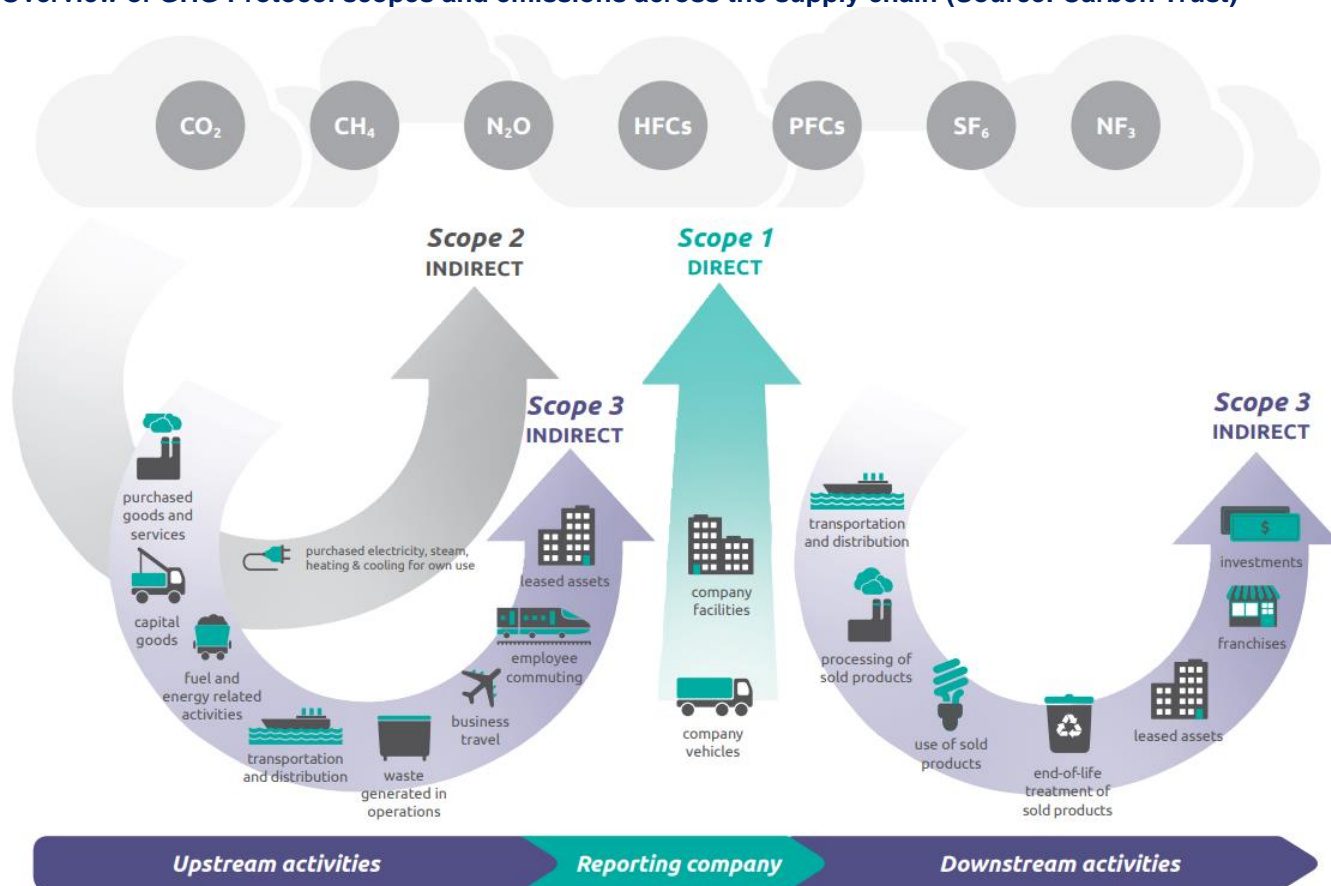
Drive DeVilbiss Healthcare Ltd.

In the UK, Drive DeVilbiss Healthcare Limited includes two subsidiary companies: Drive DeVilbiss Sidhil Limited and Specialised Orthotic Services Limited. We are part of the US owned Medical Depot Group of companies, one of the largest medical equipment and mobility product suppliers in the global market.

Drive DeVilbiss Healthcare Ltd. provide a complete line of durable medical equipment including mobility products, beds, bariatric products, wheelchairs, sleep surfaces and pressure prevention products, respiratory equipment, self-assist products, power wheelchairs, power scooters, rehabilitation products, pediatric products, patient room equipment, personal care products and electrotherapy devices.

The Company manufactures products at four sites, it also has Warehouses and Service Centres facilities across the UK. Raw materials and finished products are purchased from UK and overseas suppliers.

Overview of GHG Protocol scopes and emissions across the supply chain (Source: Carbon Trust)



Scope 1	Scope 2	Scope 3
Fuel combustion Company vehicles Fugitive emissions	Purchased electricity, heat and steam	Business travel Employee commuting Waste generated in operations Upstream transportation and distribution Downstream transportation and distribution

Commitment to achieving Net Zero

The Company is committed to reaching Net Zero carbon by 2050. Due to the type of manufacturing operations conducted, the only greenhouse gas that is relevant is CO₂, therefore our commitments relate to CO₂ only.

This Carbon Reduction Plan includes details on how we will work toward meeting our commitments. We plan to improve processes and plant efficiencies across our UK operations, and within our supply chain.

We have a good environmental record with sustained improvements year on year, pro rata with company growth.

2022 - Baseline Year Emissions		CO ₂ equivalent
Scope 1	Fuel use in company vehicles (177)	1,453 T
Scope 2	Electricity & Gas supplied	1,818 T
Scope 3	Supply chain	Not yet quantified
Total		3,271 T

2023 Emissions		CO ₂ equivalent
Scope 1	Fuel use in company vehicles (198)	1,512 T
Scope 2	¹ Electricity & Gas supplied	1,825 T
Scope 3	Supply chain	² Not fully quantified
Total		3,337 T

¹ All but one of our sites now uses electricity from 100% renewable sources. We are working with the supplier on that remaining site to transfer to 100% renewable electricity sources.

² 14.12% (12,363 of 87,557) of our parcels were delivered to customers on DPD all electric vehicles. Saving 3.412 T of CO₂ in our distribution.

Emissions reduction targets

1. Raise employee awareness about reducing energy use.
2. Regularly monitor energy consumption.
3. Identify key areas for process improvement.
4. Identify high energy use equipment and introduce more energy efficient alternatives.
5. Maintain our ISO14001 Environmental Management System certification.
6. Undertake regular energy audits to continually identify further areas for improvement.
7. Investigate and identify if any electric vehicles can be introduced into our fleet.
8. Promote the use of EVs among employees.
9. Reduce Scope 1 and Scope 2 emissions by at least 10% by 2030.
10. Assess Scope 3 emissions reporting.

Declaration and Sign Off

This Carbon Reduction Plan has been reviewed and signed off by the board of Directors.



Richard McGleenan
Managing Director